

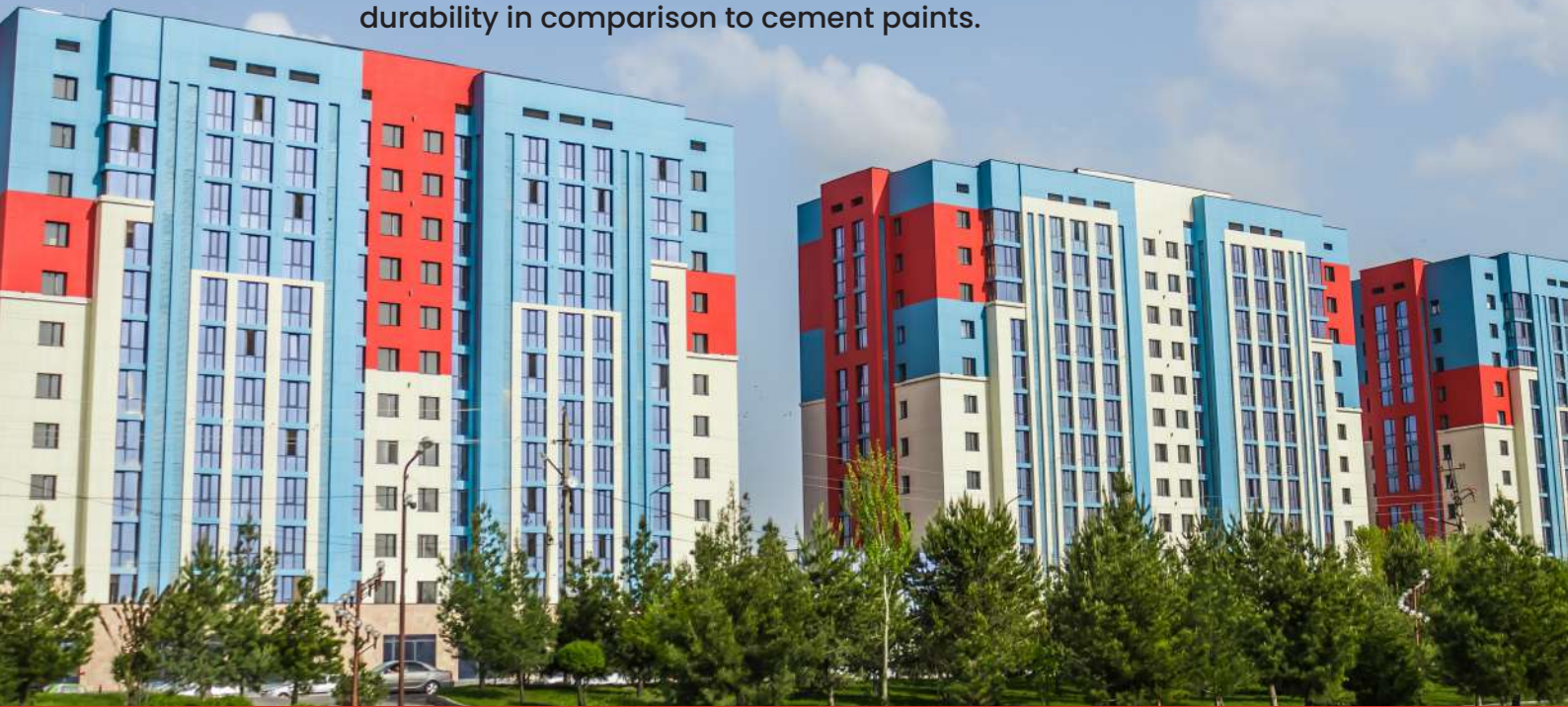
LIFECOAT

Anti-Fungal Exterior Emulsion



PRODUCT DESCRIPTION

LifeCoat Anti-Fungal Exterior Emulsion is especially formulated for dry and humid weather conditions. It provides higher coverage, better protection and durability in comparison to cement paints.



PRODUCT FEATURES



ENHANCED APPEARANCE

The emulsion enriches the look of exterior walls



FUNGUS AND ALGAE PROTECTION

LifeCoat Anti-Fungal Exterior Emulsion helps resist any formation of fungus and algae on the exterior walls

COVERAGE (APPROX)



50-55 sq.ft./L/2 coats

- Coverage may depend on factors like surface conditions, surface preparations, application skills, weather conditions, dilution, etc.
- Coverage for darker shades may vary

FINISH

SMOOTH AND MATT

AVAILABLE PACKS



20 ltr



10 ltr



4 ltr



1 ltr

A PRODUCT FROM



SHYAM STEEL

SINCE 1953

LIFECOAT

Anti-Fungal Exterior Emulsion



DIRECTIONS FOR APPLICATION

Application Method



Roller/Brush/Spray

Dilution Ratio



Add 400-500ml of potable water/L of emulsion.

Recommended Undercoat



Dura Fill Exterior Primer

Drying Time

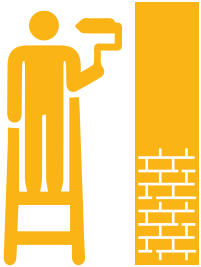


Surface Dry: 15-25 minutes

Hard Dry: 4-6 Hours

*Drying time may vary as per weather conditions

SURFACE PREPARATION AND APPLICATION



- Before application ensure the surface is free from loose particles and dirt
- Wipe the surface with a dry cloth and ensure it is completely dry
- Fill the hairline cracks with good quality crack filler/cement
- Apply Amendo Alkali- Block Exterior/Dura Fill Exterior Primer on a surface and allow minimum 4 hours drying time
- Apply 2-3 coats of LifeCoat Anti-Fungal Exterior Emulsion for best results. Keep 4-6 hours of drying time between coats

IMPORTANT NOTES



- Prior to use, shake the container well
- Dilute the paint to the standard dilution up to 40-50 % by volume. For deeper shade, dilute as per requirement
- After tinting the product with Macaw colour tinting machine, mix properly in gyro shaker
- Do not apply the paint, if the temperature is below 10°C or above 45°C
- Ideal moisture content of wall should be below 12%
- The pH value of the wall must be between 7-11
- Keep the container tightly closed after use
- Keep out of reach of children. In case of direct eye contact, rinse thoroughly with clean water and seek medical help, if required

LEAD CONTENT DOES NOT EXCEED THE LIMIT OF 90 PARTS PER MILLION

*T&C apply

SSIL Paint Industries Pvt. Ltd.

Premises No. 03-319, DH-6/11, Street No. 319, Action Area-1D, North 24 Parganas, New Town, Kolkata-700156, West Bengal

For feedback/complaints, write to the customer care at the above address or call

☎: 1800 309 4007 | ✉: enquiry@macawpaints.com | 🌐: www.macawpaints.com

A PRODUCT FROM

